



# BACKING PANS AND TRAYS

FIND THE BEST SOLUTION FOR BACKING PANS ADAPTED TO CUSTOMERS'S CORE INTERESTS



## Baking Tray



**RS-01**  
Subway Baking Tray  
Alloy Steel Non-stick Coated  
Size-305x455x25 mm



**RS-02**  
Baking Tray  
Alloy Steel  
Size-400x600x25 mm



**RS-03**  
Baking Tray  
Perforated Alloy Steel  
Size-400x600x25 mm



**RS-04**  
Baking Tray  
Alloy Steel Non-stick Coated  
size-400x600x25 mm



**RS-05**  
Baguette Tray  
Alloy Steel  
Size-400x600x30 mm

## Muffin Tray



**RS-01**  
Muffin Baking Tray  
Alloy Steel Non-stick coated  
Size-400x600x30 mm



**RS-02**  
Muffin Baking Tray  
Alloy Steel Non-stick coated  
Size-400x600x30 mm



**RS-03**  
Muffin Baking Tray  
Alloy Steel Non-stick coated  
Size-400x600x30 mm



**RS-04**  
Donut Baking Tray  
Alloy Steel Non-stick coated  
Size-330x455x30 mm



**RS-05**  
Muffin Baking Tray  
Alloy Steel Non-stick coated  
Size-400x600x30 mm

## Bar Cake Tray



**RS-01**  
Bar Cake Tray  
Alloy Steel Non-stick Coated  
Size-450x700x40 mm



**RS-02**  
Honey bell tray  
Alloy Steel Non-stick Coated  
Size-350x500x30 mm



**RS-03**  
Bar Cake Tray  
Alloy Steel Non-stick Coated  
Size-330x450x35 mm

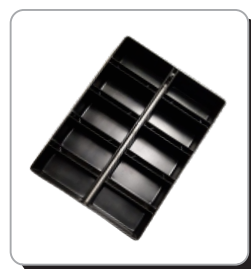


**RS-04**  
Bar Cake Tray  
Alloy Steel Non-stick Coated  
Size-330x450x30 mm

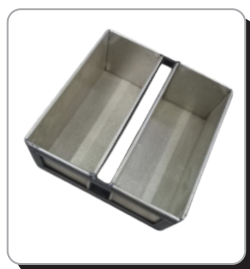


**RS-05**  
Bar Cake Tray  
Alloy Steel Non-stick Coated  
Size-450x700x40 mm

## Bread Pans



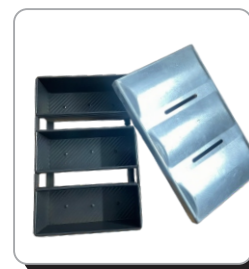
**RS-01**  
Bread Pan  
Alloy Steel Non-stick Coated  
Size-270x115x115 mm,03 Pkt.



**RS-02**  
Bread Pan  
Alloy Steel  
Size-280x110x110 mm,02 Pkt.



**RS-03**  
Bread Pan  
Alloy Steel Non-stick Coated  
Size-200x100x100 mm,03 Pkt.



**RS-04**  
Bread Pan  
Alloy Steel Non-stick Coated  
Size-200x100x100 mm,08 Pkt.



**RS-05**  
Jumbo Bread Pans  
Alloy Steel Non-stick Coated  
Size-350x150x150 mm,single Pkt.

## Baking Tray



RS-01

**Burger Baking Tray**  
Alloy Steel Non-stick Coated  
Size-400x600x25 mm



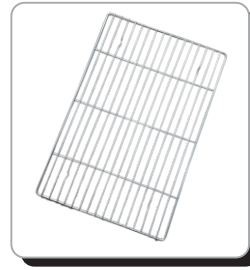
RS-02

**Burger Baking Tray**  
Alloy Steel Non-stick Coated  
Size-330x455x30 mm



RS-03

**Hot Dog Baking Tray**  
Alloy Steel Non-stick Coated  
Size-330x455x30 mm



RS-04

**Cooling Tray**  
Stainless Steel  
Size-400x600 mm



RS-05

**Hot Dog Tray**  
Alloy Steel  
Size-400x600x25 mm

## Cake Pans



RS-01

**Heart Shape Cake Pans**  
Alloy Steel Non-stick coated  
Size-6",7",8",10",12"



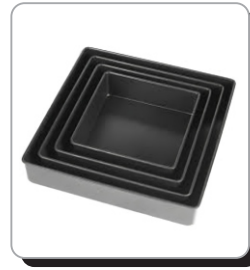
RS-02

**Rectangular Cake Pans**  
Alloy Steel Non-stick coated  
Size-170x80x50mm



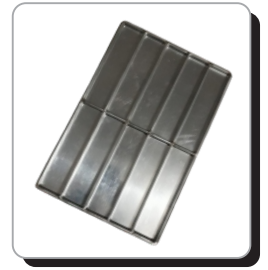
RS-03

**Round cake pans**  
Alloy Steel Non-stick coated  
Size-6",7",8",10",12"



RS-04

**Square Cake Pans**  
Alloy Steel Non-stick coated  
Size-6",7",8",10",12"



RS-05

**Layer Cake Baking Tray**  
Alloy Steel  
Size-400x600x25 mm

## Baking Accessories



RS-01

**Burger Rings**  
Stainless Steel  
Size-4",5",6",7"



RS-02

**Oven Trolley**  
Mild Steel/Stainless Steel  
Size-1800x660x800 mm



RS-03

**Cooling Trolley**  
Mild Steel/Stainless Steel  
Size-1500x600x1600 mm



RS-04

**Trolley Wheels**  
Mild Steel  
Size-100x32,150x38 mm



RS-05

**Buggy Trolley**  
Stainless Bowl with Lid  
Size-720x780x700 mm

## Rusk Pans



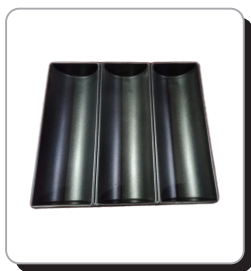
RS-01

**Rusk Pan**  
Alloy Steel Non-stick Coated  
Size-320x90x50 mm,04 pkt



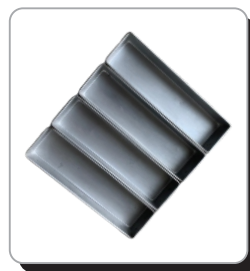
RS-02

**Rusk Pan**  
Alloy Steel  
Size-320x85x45 mm,04 pkt



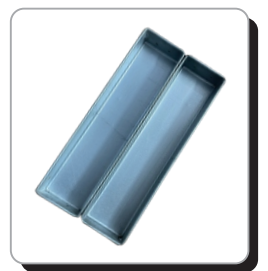
RS-03

**Rusk Pan (D Shape)**  
Alloy Steel  
Size-280x85x45 mm,04 pkt



RS-04

**Rusk Pans**  
Alloy Steel  
Size-375x77x45 mm,06 pkt



RS-05

**Rusk Pans**  
Alloy Steel  
Size-375x85x45 mm,02 pkt

## — About Us —

At riddhi siddhi technology we are dedicated to redefining excellence in kitchenware and culinary solutions. With a strong commitment to innovation and quality, our products are designed to meet the needs for perfect baking of Small and big Bakerys and professional kitchens alike and hotels.

### Why Choose Us?

Our products stand out for their unparalleled features and advantages:

**Food Grade Materials:** Crafted with materials that ensure the safety and hygiene of your Products.

**Easy to Clean:** Our non-stick and thoughtfully designed surfaces make cleaning effortless.

**Energy Efficient:** Engineered to optimize energy use, reducing backing time and saving on utility bills.

**Anti-Corrosive:** Built to withstand time and use, resisting rust and wear for prolonged durability.

**Durable Construction:** Designed to endure rigorous daily use while maintaining superior performance.

**High-Quality Materials:** Premium components ensure reliability, functionality, and long-lasting satisfaction.

**Non-Stick Feature:** Baking with ease and confidence, using less oil and experiencing hassle-free food release.

At riddhi siddhi, we are passionate about enhancing your baking experience with products that combine style, utility, and sustainability. Trust us to deliver tools that make every meal preparation seamless and enjoyable. A perfect blend of quality and innovation – because you deserve the best in your Bakeryes.

## RIDDHI SIDDHI TECHNOLOGY

PLOT NO 9 SECRET NO 2

NEAR SANTIDHAM BUS STAND

NEAR SANDURI CAST SHAPAR

VERAVAL 360024

MOBILE NO -+91 95588 17973

WEBSITE-riddhisiddhitechnology.com

MAIL - sales@riddhisiddhitechnology.com

